



Scan to explore
ZLV44 online

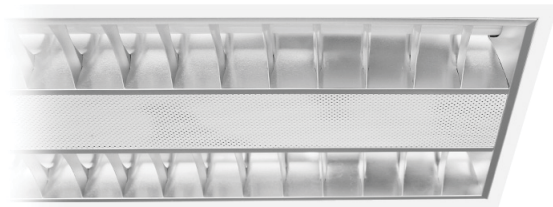
Louvred Troffer ZLV44

35W Recessed Louvred Troffer

Product Code	Colour Temperature	Colour Technology	Beam Angle	Trim Colour	Driver	Emergency Kits *
ZLV44	2.7 (2700K)	(CRI 90+ Standard)	VW (Very Wide)	W (White)	ND (Non-dimmable) DALI (DALI)	EMB (Maintained Backup) ENB (Non-maintained Backup)
	3 (3000K)					
	3.5 (3500K)					
	4 (4000K)					
	5 (5000K)					

Order Code **ZLV444-VW-W-ND**

* Optional emergency kits



Product Features

- Recessed louvred LED troffer in powder coated aluminium body with acrylic diffuser for uniform lighting distribution
- Suitable for mounting in metric T-Bar ceiling applications
- CRI 90+ available in 2700K, 3000K, 3500K, 4000K and 5000K CCT options
- Emergency maintained or non-maintained battery backup options available on request
- Supplied with an integral driver and internally mounted 4mm terminal block

Product Attributes



To configure this troffer, please visit
trendlighting.com.au/product/louvred-troffer-ZLV44

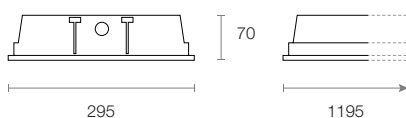
Physical Characteristics

Trim Colour	White
Dimensions (LxWxH)	1196 x 295 x 70 mm
Weight	4.1 kg

Dimensions (mm)



Side view



Technical Characteristics

Based on ZLV444-VW-W-ND

LED Power	30W
LED Type	SMD
Lumen Output	4464 lm
Luminous Flux	1790 lm
Efficacy	47.48 lm/W
Colour Temperature	2700K 3000K 3500K 4000K 5000K
Colour Technology	CRI 90+
Colour Deviation	SDCM ≤ 3
Lifetime	50,000 hours (L80)
Beam Angle	Very Wide

System Power	37.7W Typical
Driver Model	Trend 150232 (Non-dim)
Input	220-240V AC 50/60 Hz
Output	24V DC 2.08A
Power Factor	>0.93
Protection	OVP, OTP, OCP, SCP, OPP
Dimming	Non-dimmable DALI

General Characteristics

Category	Panels & Troffers
Family	Louvred Troffer
Surface	Ceiling
Mounting	Recessed
Insulation Contact	Non-IC
Ingress Protection	IP20



Scan to explore
[ZLV44](#) online

Louvred Troffer ZLV44

35W Recessed Louvred Troffer

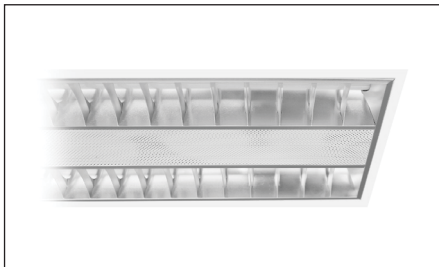
Product Code	Colour Temperature	Colour Technology	Beam Angle	Trim Colour	Driver	Emergency Kits *
ZLV44	2.7 (2700K)	(CRI 90+ Standard)	VW (Very Wide)	W (White)	ND (Non-dimmable) DALI (DALI)	EMB (Maintained Backup)
	3 (3000K)					ENB (Non-maintained Backup)
	3.5 (3500K)					
	4 (4000K)					
	5 (5000K)					

Order Code **ZLV444-VW-W-ND**

* Optional emergency kits

To configure this troffer, please visit
trendlighting.com.au/product/louvred-troffer-ZLV44

Trim Colour



W
White Trim

Emergency Kits *

EMB

Emergency Kit with Maintained Backup

- Illuminated all the time for safety but has the capacity to be switched on and off
- Continues to illuminate at a lower-level in the event of loss of power using its battery backup supply

ENB

Emergency Kit with Non-maintained Backup

- Only illuminates in the event of a loss of power
- When power fails, the fixture switches on using its battery backup supply