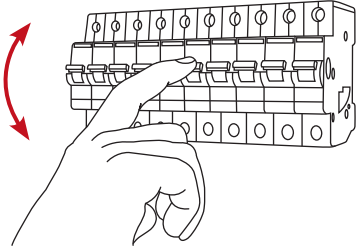
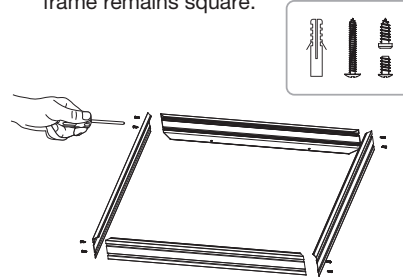


**Surface Mounted Installation** (Requires Optional Surface Mounting Kit)

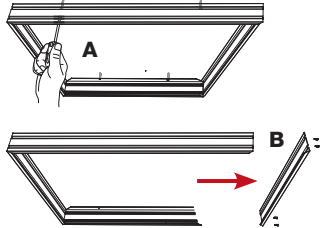
**1** Isolate the mains power supply prior to commencing installation.



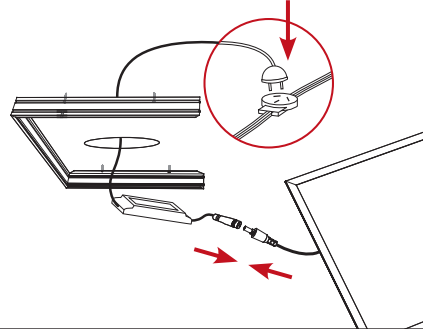
**2** Assemble all four sides of the surface mounted frame with the screws provided. This will ensure that the frame remains square.



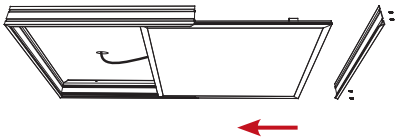
**3** Install the surface mounted frame to the ceiling (**A**) with all four sides attached. Once installed, unscrew and remove one side of the frame (**B**).



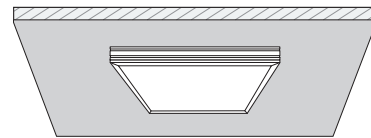
**4** Connect LED panel light to the driver. Connect the driver flex and plug to the socket.



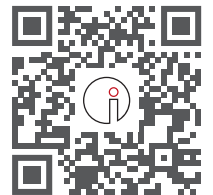
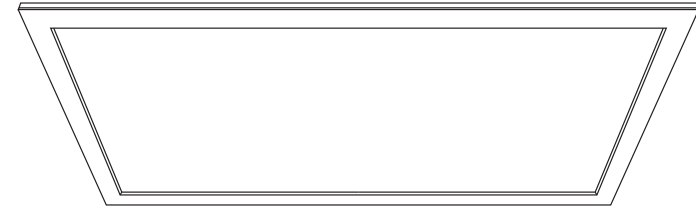
**5** Slide the LED panel light with the driver into the surface mounted frame. Re-screw the removed side panel back to secure the panel.



**6** Restore power once installation has been completed.



# Medical ZPL20-MED COI Compliant Rectangular Panel Light *Installation Guide*



**For warranty information, please visit**  
trendlighting.com.au/warranty

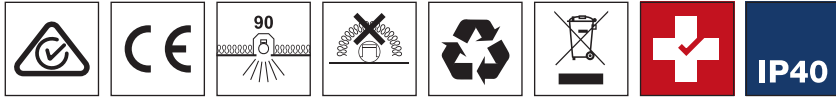
**Important Safety Information**

Please read these installation instructions carefully before installing this luminaire.

- This product must be installed by a licensed electrician.
- Isolate the mains power supply prior to installation.
- Always ensure the mains power is OFF and that the fitting has been given time to cool before performing any maintenance or adjustment.
- Only reconnect mains power after installation is completed.
- Do not install luminaire near any heat sources.
- No part of the luminaire should be altered or modified.
- This product is not user serviceable.
- **Do not cover the luminaire with any heat insulating materials.**

**Approvals**

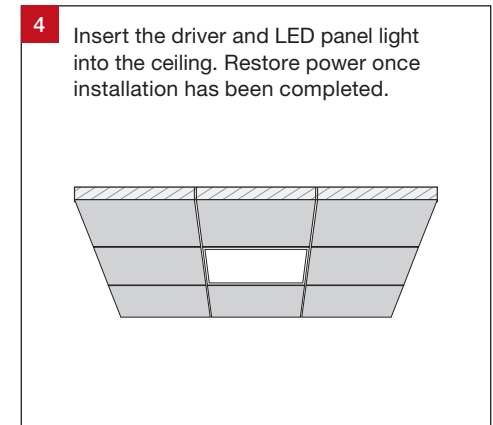
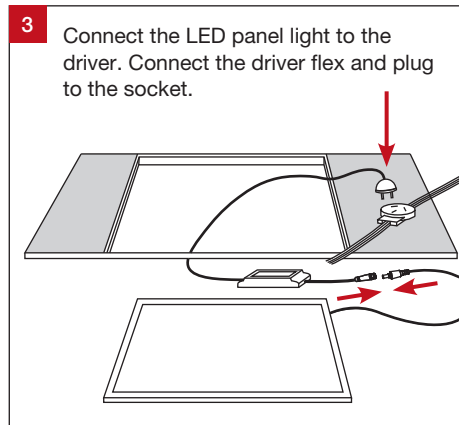
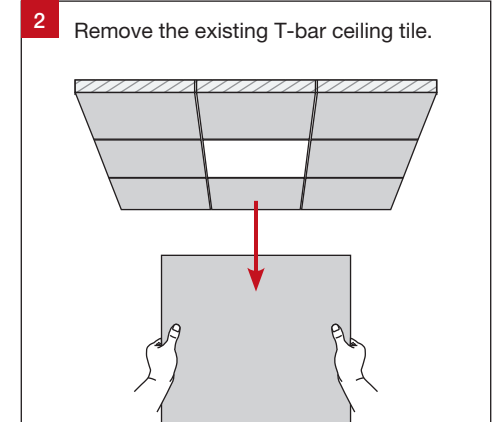
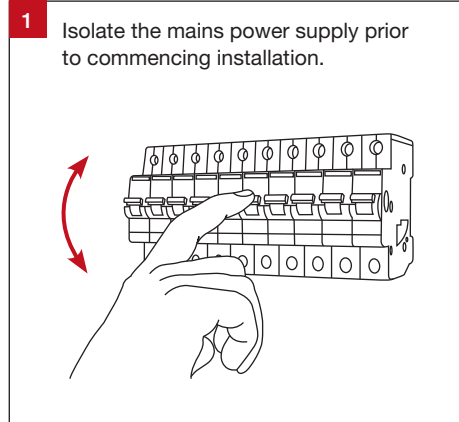
The RCM marking of this product applies to AS/NZS CISPR15:2011 “Limits and methods of measurement of radio disturbance characteristics of electrical lighting and similar equipment.” This product is designed to conform to AS/NZS60598.



**Product Attributes**

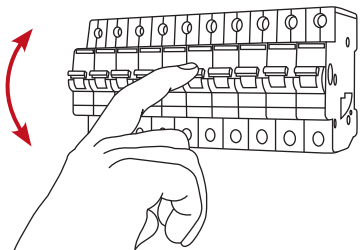
Product Code	Mounting Kits	Dimensions
ZPL20-MED-4-UW-W-ND	Standard T-Bar	595 (L) x 295 (W) x 12 (H) mm
ZPL20-MED-4-UW-W-SP-ND	Suspension Kit (SP)	595 (L) x 295 (W) x 12 (H) mm
ZPL20-MED-4-UW-W-PR-ND	Plaster Recessing Kit (PR)	630 (L) x 330 (W) x 40 (H) mm
ZPL20-MED-4-UW-W-SM-ND	Surface Mounting Kit (SM)	600 (L) x 300 (W) x 55 (H) mm

**T-Bar Ceiling Installation (Standard)**

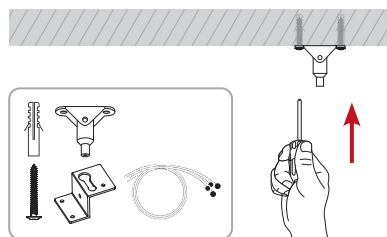


## Suspended Installation (Requires Optional Suspension Kit)

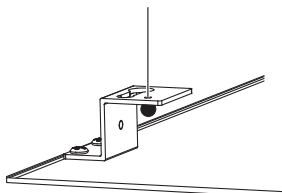
- 1** Isolate the mains power supply prior to commencing installation.



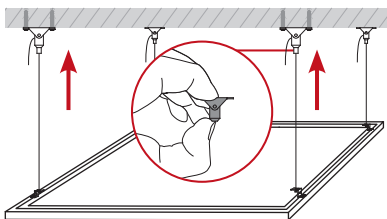
- 2** Mount the suspension bracket to the ceiling.



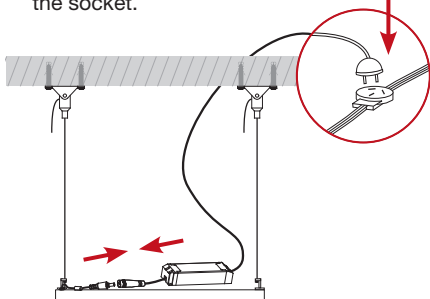
- 3** Screw the mounting bracket to the LED panel light and thread the suspension wire through the mounting bracket hole.



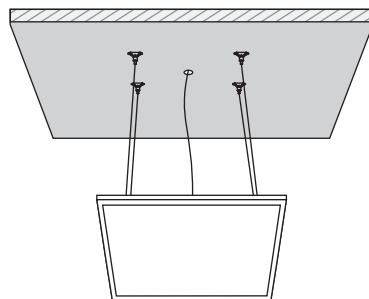
- 4** Thread suspension wire through the ceiling suspension bracket. Depress the top of the suspension bracket to release the clutch and to lengthen the wire.



- 5** Connect the LED panel light to the driver. Connect the driver flex and plug the socket.

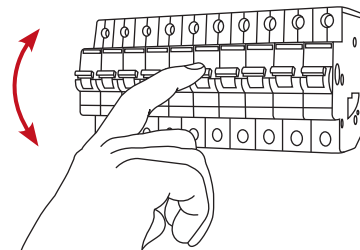


- 6** Restore power once installation has been completed.

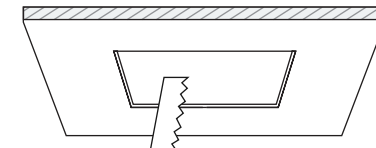


## Recessed Installation (Requires Optional Plaster Recessing Kit)

- 1** Isolate the mains power supply prior to commencing installation.

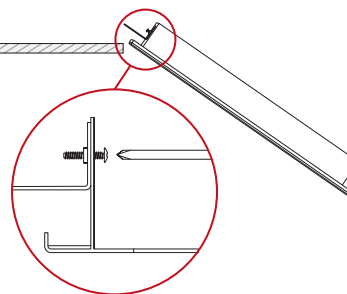


- 2** Mark at the correct location. Cut a hole in the ceiling in accordance with cutout size.

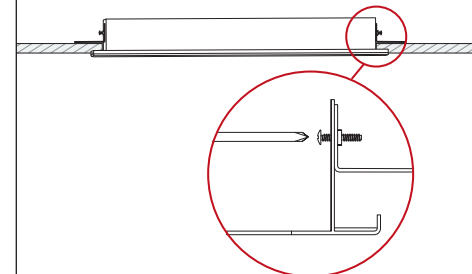


ZPL20-MED ceiling cutout:  
**610 x 310 mm**

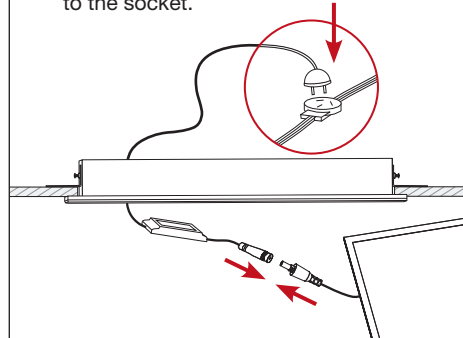
- 3** Attach two brackets to one side of the recessed frame.



- 4** Insert the recessed frame into ceiling cutout and attach the remaining two brackets to the other side of the frame.



- 3** Connect the LED panel light to the driver. Connect the driver flex and plug to the socket.



- 4** Insert the driver and LED panel light into the frame. Restore power once installation has been completed.

