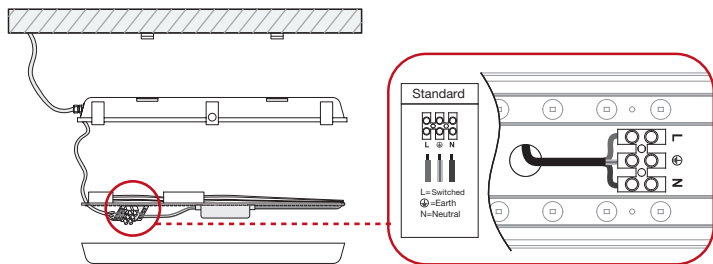
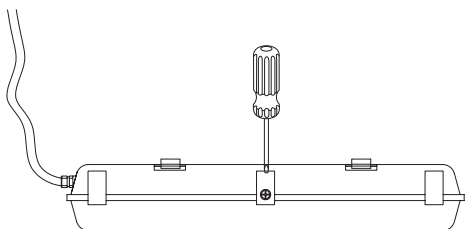


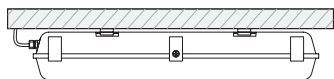
- 6** Connect the mains wiring to the terminal block on the rear of the LED tray. Protect the PCB from damage during the installation process.



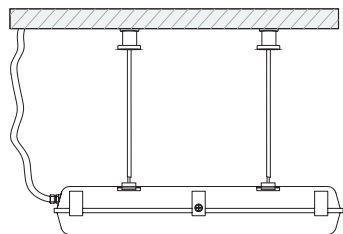
- 7** Secure the luminaire side tabs with screws.



- 8a** For **Surface Mounted** installation, firmly attach the luminaire to the mounting brackets on the ceiling.

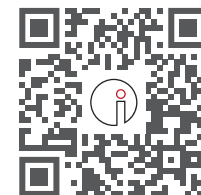
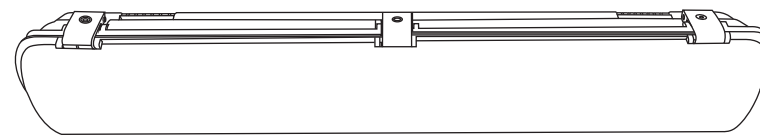


- 8b** For **Suspended** installation, attach the supplied suspension brackets to the ceiling. Connect the suspension cable to the luminaire. **Cable is not included.**



# Nero WP1201 IP65 & IK08 Rated Tricolour Weatherproof Batten *Installation Guide*

V2-20.07.2023 Product designs and technical data may be subject to change



Scan to explore  
WP1201 online

**For warranty information please visit**

[trendlighting.com.au/warranty](http://trendlighting.com.au/warranty)

**Important Safety Information**

Please read these installation instructions carefully before installing this luminaire.

- This product must be installed by a licensed electrician in accordance with AS/NZS 3000 and local regulations
- Isolate the mains power supply prior to installation
- Only adjust the CCT switch when luminaire is powered off
- Only reconnect mains power after installation is completed
- No part of the luminaire should be altered or modified
- This product is not user serviceable

**Installation Notes**



Emergency \* (Optional)    Sensor \*\* (Optional)    Ingress Protection    Impact Protection

**Product Code**

**WP1201-TRI-W-ND**

**WP1201-TRI-W-ND-EMB (Emergency)**

**Dimensions**

1215 (L) x 116 (W) x 74 (H) mm

1215 (L) x 116 (W) x 74 (H) mm

\* Emergency option is available.    \*\* Detection area: 140 degree wide detective beam angle with 4-6 meters distance

**Sensor Settings (For Optional Microwave Sensor)**

Detection Area			Hold Time *			Daylight Sensor **			Stand-by Time ***		
1	2		3	4		5	6		7	8	
ON	ON	100%	ON	ON	5 sec	ON	ON	5 lux	ON	ON	0 sec
ON	-	75%	ON	-	1 min	ON	-	15 lux	ON	-	1 min
-	ON	50%	-	ON	5 min	-	ON	50 lux	-	ON	5 min
-	-	25%	-	-	10 min	-	-	Disable	-	-	+ ∞

\* Refers to the time period the lamp remains at 100% illumination after no motion detected  
 \*\* Sensor can be set to only allow the lamp to illuminate below a defined ambient brightness threshold. When set to Disable mode, the daylight sensor will switch on the lamp when motion is detected regardless of the ambient light level.  
 \*\*\* Refers to the time period the lamp remains at low illumination after the Hold Time

