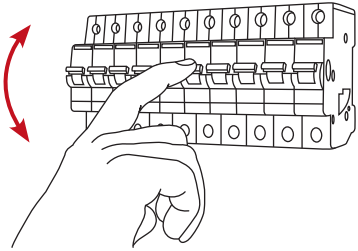
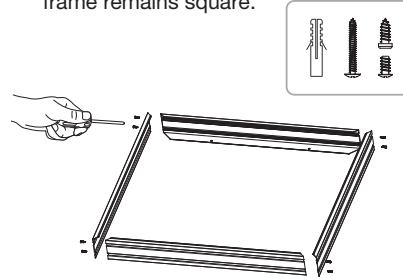


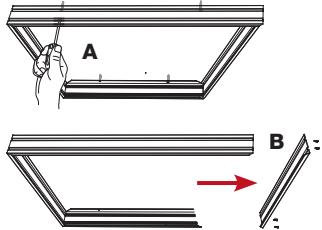
1 Isolate the mains power supply prior to commencing installation.



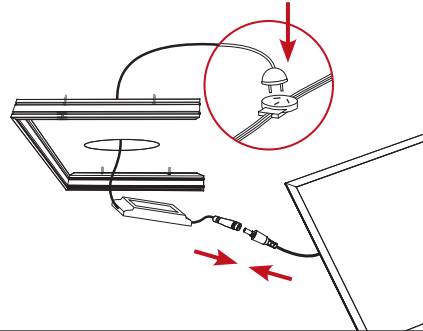
2 Assemble all four sides of the surface mounted frame with the screws provided. This will ensure that the frame remains square.



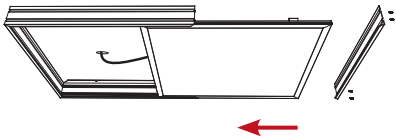
3 Install the surface mounted frame to the ceiling (A) with all four sides attached. Once installed, unscrew and remove one side of the frame (B).



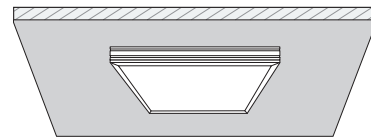
4 Connect LED panel light to the driver. Connect the driver flex and plug to the socket.



5 Slide the LED panel light with the driver into the surface mounted frame. Re-screw the removed side panel back to secure the panel.



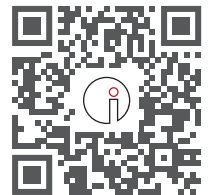
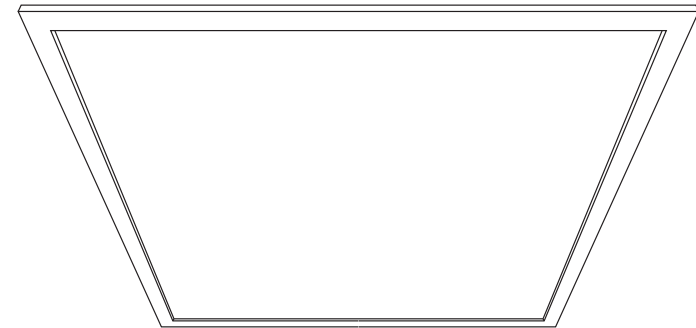
6 Restore power once installation has been completed.



Panel ZPM20

Square Panel Light

Installation Guide



For warranty information, please visit
trendlighting.com.au/warranty

Important Safety Information

Please read these installation instructions carefully before installing this luminaire.

- This product must be installed by a licensed electrician.
- Isolate the mains power supply prior to installation.
- Always ensure the mains power is OFF and that the fitting has been given time to cool before performing any maintenance or adjustment.
- Only reconnect mains power after installation is completed.
- Do not install luminaire near any heat sources.
- No part of the luminaire should be altered or modified.
- This product is not user serviceable.
- **Do not cover the luminaire with any heat insulating materials.**

Approvals

The RCM marking of this product applies to AS/NZS CISPR15:2011 “Limits and methods of measurement of radio disturbance characteristics of electrical lighting and similar equipment.” This product is designed to conform to AS/NZS60598.

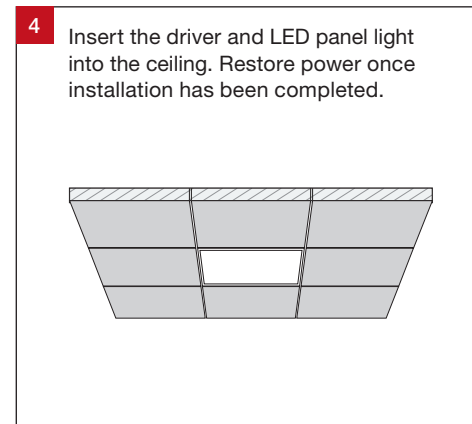
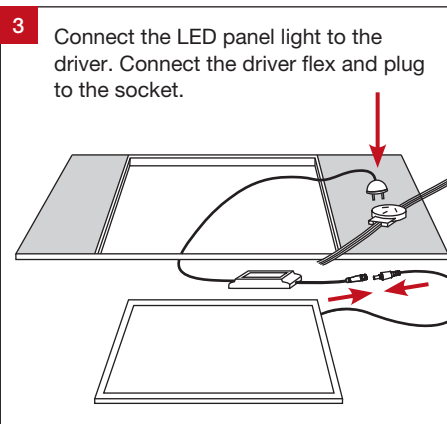
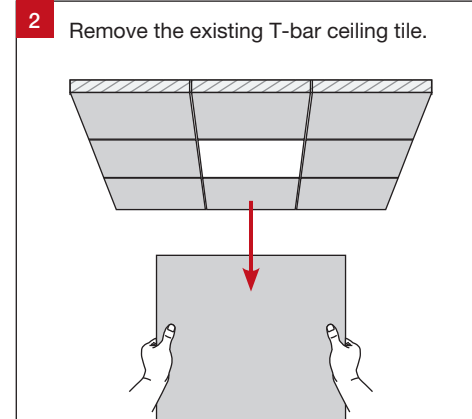
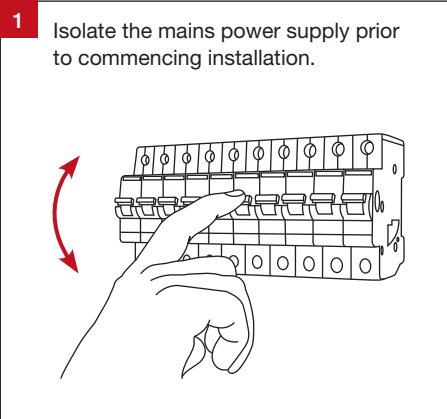


Product Attributes

Product Code	Mounting Kits	Dimensions
ZPM204-UW-W-ND *	Standard T-Bar	595 (L) x 595 (W) x 12 (H) mm
ZPM204-UW-W-SP-ND *	Suspension Kit (SP)	595 (L) x 595 (W) x 12 (H) mm
ZPM204-UW-W-PR-ND *	Plaster Recessing Kit (PR)	630 (L) x 630 (W) x 40 (H) mm
ZPM204-UW-W-SM-ND *	Surface Mounting Kit (SM)	600 (L) x 600 (W) x 55 (H) mm

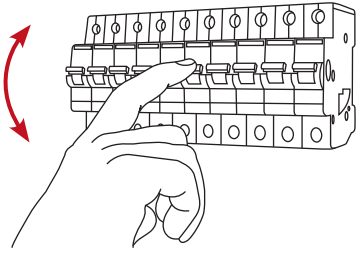
* ZPM20 available in 3000K (3) and 4000K (4) colour temperature.

T-Bar Ceiling Installation (Standard)

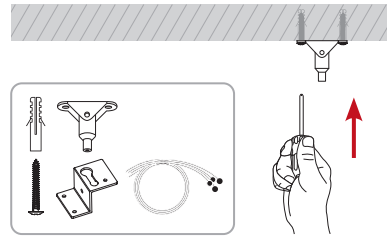


Suspended Installation (Requires Optional Suspension Kit)

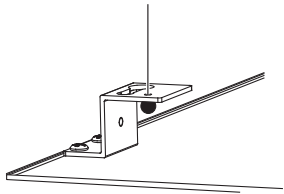
- 1** Isolate the mains power supply prior to commencing installation.



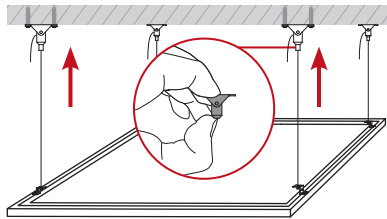
- 2** Mount the suspension bracket to the ceiling.



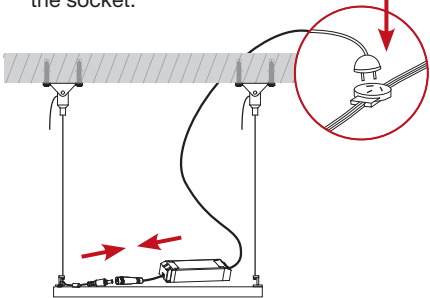
- 3** Screw the mounting bracket to the LED panel light and thread the suspension wire through the mounting bracket hole.



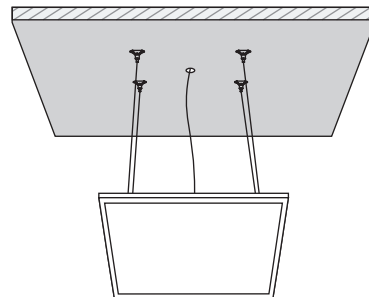
- 4** Thread suspension wire through the ceiling suspension bracket. Depress the top of the suspension bracket to release the clutch and to lengthen the wire.



- 5** Connect the LED panel light to the driver. Connect the driver flex and plug the socket.

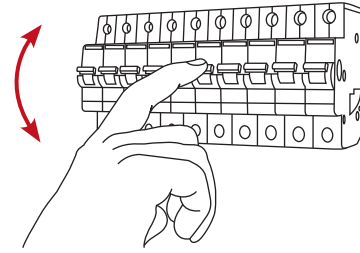


- 6** Restore power once installation has been completed.

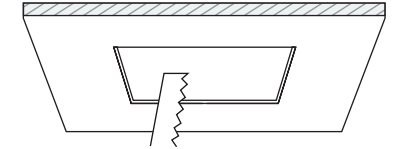


Recessed Installation (Requires Optional Plaster Recessing Kit)

- 1** Isolate the mains power supply prior to commencing installation.

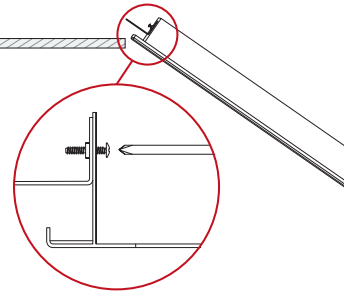


- 2** Mark at the correct location. Cut a hole in the ceiling in accordance with cutout size.

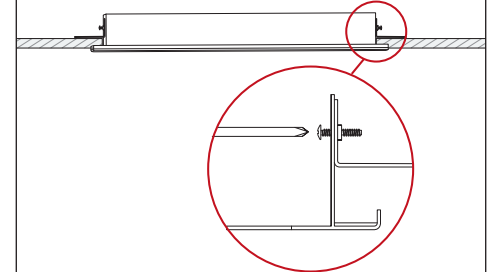


ZPM20 ceiling cutout:
610 x 610 mm

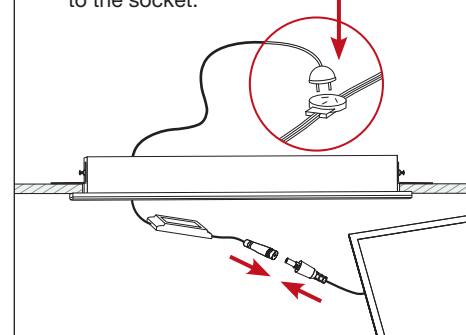
- 3** Attach two brackets to one side of the recessed frame.



- 4** Insert the recessed frame into ceiling cutout and attach the remaining two brackets to the other side of the frame.



- 3** Connect the LED panel light to the driver. Connect the driver flex and plug to the socket.



- 4** Insert the driver and LED panel light into the frame. Restore power once installation has been completed.

